

## 验证报告

No. SHAEC2116136502

日期: 2021年10月08日 第1页,共35页

苏州博乐格电机技术有限公司  
苏州市工业园区双灯路2号

样品名称: EC72/92电机  
SGS工作编号: SP21-023732 - SH  
测试基本型号: EC72  
样品接收日期: 2021年07月29日  
验证周期: 2021年07月29日 - 2021年09月30日  
验证要求: 参考欧盟RoHS指令2011/65/EU的修正指令(EU) 2015/863。  
验证方法: 请参见后续页。  
验证结果: 请参见后续页。  
验证结论: 依据对所提供样品的相关验证, 铅、汞、镉、六价铬、多溴联苯(PBBs)、多溴二苯醚(PBDEs) 和邻苯二甲酸酯(如邻苯二甲酸二丁酯 (DBP)、邻苯二甲酸丁苄酯(BBP)、邻苯二甲酸二(2-乙基己基)酯(DEHP)和邻苯二甲酸二异丁酯(DIBP))的测试结果符合欧盟RoHS指令2011/65/EU附录II修正指令(EU) 2015/863的限值要求。

通标标准技术服务(上海)有限公司  
授权签名

方金

Peter Fang 方金  
批准签署人



Unless otherwise agreed in writing, this document is issued by the Company subject to its General Conditions of Service printed overleaf, available on request or accessible at <http://www.sgs.com/en/Terms-and-Conditions.aspx> and, for electronic format documents, subject to Terms and Conditions for Electronic Documents at <http://www.sgs.com/en/Terms-and-Conditions/Terms-e-Documents.aspx>. Attention is drawn to the limitation of liability, indemnification and jurisdiction issues defined therein. Any holder of this document is advised that information contained hereon reflects the Company's findings at the time of its intervention only and within the limits of Client's instructions, if any. The Company's sole responsibility is to its Client and this document does not exonerate parties to a transaction from exercising all their rights and obligations under the transaction documents. This document cannot be reproduced except in full, without prior written approval of the Company. Any unauthorized alteration, forgery or falsification of the content or appearance of this document is unlawful and offenders may be prosecuted to the fullest extent of the law. Unless otherwise stated the results shown in this test report refer only to the sample(s) tested.

Attention: To check the authenticity of testing / inspection report & certificate, please contact us at telephone: (86-755) 8307 1443, or email: [CN.Doccheck@sgs.com](mailto:CN.Doccheck@sgs.com)

3<sup>rd</sup> Building, No. 889 Yishan Road Xuhui District, Shanghai China 200233 t E&E (86-21) 61402553 f E&E (86-21) 64953679 www.sgsgroup.com.cn  
中国·上海·徐汇区宜山路889号3号楼 邮编: 200233 t HL (86-21) 61402594 f HL (86-21) 61156899 e [sgs.china@sgs.com](mailto:sgs.china@sgs.com)

## 验证报告

No. SHAEC2116136502

日期: 2021年10月08日 第2页,共35页

验证方法:

1. 参考IEC 62321-2:2013, 拆分申请者提供的成品。
2. 参考IEC 62321-1:2013, 仅对本报告照片中标识的样品进行了下列测试分析。
  - (1) 参考IEC 62321-3-1: 2013, 用能量色散型X射线荧光分析仪器进行筛选
  - (2) 湿法化学测试方法
    - a. 参考IEC 62321-5:2013, 用ICP-OES测定镉的含量
    - b. 参考IEC 62321-5:2013, 用ICP-OES测定铅的含量
    - c. 参考IEC 62321-4:2013+AMD1:2017, 用ICP-OES测定汞的含量
    - d. 参考IEC 62321-7-1:2015, IEC 62321-7-2:2017 和ISO 17075-1:2017, 用紫外-可见分光光度计比色法测定六价铬的含量
    - e. 参考IEC 62321-6:2015, 用GC-MS测定多溴联苯和多溴二苯醚的含量
3. 参考IEC 62321-8:2017, 用GC-MS测定邻苯二甲酸酯的含量



Unless otherwise agreed in writing, this document is issued by the Company subject to its General Conditions of Service printed overleaf, available on request or accessible at <http://www.sgs.com/en/Terms-and-Conditions.aspx> and, for electronic format documents, subject to Terms and Conditions for Electronic Documents at <http://www.sgs.com/en/Terms-and-Conditions/Terms-e-Documents.aspx>. Attention is drawn to the limitation of liability, indemnification and jurisdiction issues defined therein. Any holder of this document is advised that information contained hereon reflects the Company's findings at the time of its intervention only and within the limits of Client's instructions, if any. The Company's sole responsibility is to its Client and this document does not exonerate parties to a transaction from exercising all their rights and obligations under the transaction documents. This document cannot be reproduced except in full, without prior written approval of the Company. Any unauthorized alteration, forgery or falsification of the content or appearance of this document is unlawful and offenders may be prosecuted to the fullest extent of the law. Unless otherwise stated the results shown in this test report refer only to the sample(s) tested.

Attention: To check the authenticity of testing / inspection report & certificate, please contact us at telephone: (86-755) 8307 1443, or email: [CN.Doccheck@sgs.com](mailto:CN.Doccheck@sgs.com)

3<sup>rd</sup> Building, No. 889 Yishan Road Xuhui District, Shanghai China 200233 t E&E (86-21) 61402553 f E&E (86-21) 64953679 www.sgsgroup.com.cn  
中国·上海·徐汇区宜山路889号3号楼 邮编: 200233 t HL (86-21) 61402594 f HL (86-21) 61156899 e [sgs.china@sgs.com](mailto:sgs.china@sgs.com)

## 验证报告

No. SHAEC2116136502

日期: 2021年10月08日 第3页,共35页

样品编号	样品描述	限用物质	EDXRF 筛分结果 <sup>(1)</sup>	PHTH筛分结果 <sup>(2)</sup>	化学测试结果 <sup>(3)</sup> (mg/kg)	EU RoHS 结论	样品提交/再次提交日期
1	底座上银色金属	Pb Cd Hg Cr(VI)▼ PBBs PBDEs DBP BBP DEHP DIBP	BL BL BL BL --- --- --- --- --- ---	--- --- --- --- --- --- --- --- --- ---	--- --- --- --- --- --- --- --- --- ---	符合 符合 符合 符合 --- --- --- --- --- ---	29 Jul 2021
2	底座上浅蓝色胶	Pb Cd Hg Cr(VI)▼ PBBs PBDEs DBP BBP DEHP DIBP	BL BL BL BL BL BL --- --- --- ---	--- --- --- --- --- --- IN IN IN IN	--- --- --- --- --- --- ND ND ND ND	符合 符合 符合 符合 符合 符合 符合 符合 符合 符合	29 Jul 2021



SGS-CSTC (Shanghai) Technical Services Co., Ltd.  
Testing Center (China) Co., Ltd.

Unless otherwise agreed in writing, this document is issued by the Company subject to its General Conditions of Service printed overleaf, available on request or accessible at <http://www.sgs.com/en/Terms-and-Conditions.aspx> and, for electronic format documents, subject to Terms and Conditions for Electronic Documents at <http://www.sgs.com/en/Terms-and-Conditions/Terms-e-Documents.aspx>. Attention is drawn to the limitation of liability, indemnification and jurisdiction issues defined therein. Any holder of this document is advised that information contained hereon reflects the Company's findings at the time of its intervention only and within the limits of Client's instructions, if any. The Company's sole responsibility is to its Client and this document does not exonerate parties to a transaction from exercising all their rights and obligations under the transaction documents. This document cannot be reproduced except in full, without prior written approval of the Company. Any unauthorized alteration, forgery or falsification of the content or appearance of this document is unlawful and offenders may be prosecuted to the fullest extent of the law. Unless otherwise stated the results shown in this test report refer only to the sample(s) tested.

Attention: To check the authenticity of testing / inspection report & certificate, please contact us at telephone: (86-755) 8307 1443, or email: [CN.Doccheck@sgs.com](mailto:CN.Doccheck@sgs.com)

3<sup>rd</sup> Building, No. 889 Yishan Road Xuhui District, Shanghai China 200233  
中国·上海·徐汇区宜山路889号3号楼 邮编: 200233

t E&E (86-21) 61402553 f E&E (86-21) 64953679 www.sgsgroup.com.cn  
t HL (86-21) 61402594 f HL (86-21) 61156899 e [sgs.china@sgs.com](mailto:sgs.china@sgs.com)

## 验证报告

No. SHAEC2116136502

日期: 2021年10月08日 第4页,共35页

样品编号	样品描述	限用物质	EDXRF 筛分结果 <sup>(1)</sup>	PHTH筛分结果 <sup>(2)</sup>	化学测试结果 <sup>(3)</sup> (mg/kg)	EU RoHS 结论	样品提交/再次提交日期
3	底座上黑色橡胶	Pb	BL	---	---	符合	29 Jul 2021
		Cd	BL	---	---	符合	
		Hg	BL	---	---	符合	
		Cr(VI)▼	BL	---	---	符合	
		PBBs	BL	---	---	符合	
		PBDEs	BL	---	---	符合	
		DBP	---	IN	ND	符合	
		BBP	---	IN	ND	符合	
		DEHP	---	IN	ND	符合	
4	银色金属螺丝	Pb	BL	---	---	符合	29 Jul 2021
		Cd	BL	---	---	符合	
		Hg	BL	---	---	符合	
		Cr(VI)▼	BL	---	---	符合	
		PBBs	---	---	---	---	
		PBDEs	---	---	---	---	
		DBP	---	---	---	---	
		BBP	---	---	---	---	
		DEHP	---	---	---	---	
		DIBP	---	IN	ND	符合	



Unless otherwise agreed in writing, this document is issued by the Company subject to its General Conditions of Service printed overleaf, available on request or accessible at <http://www.sgs.com/en/Terms-and-Conditions.aspx> and, for electronic format documents, subject to Terms and Conditions for Electronic Documents at <http://www.sgs.com/en/Terms-and-Conditions/Terms-e-Documents.aspx>. Attention is drawn to the limitation of liability, indemnification and jurisdiction issues defined therein. Any holder of this document is advised that information contained hereon reflects the Company's findings at the time of its intervention only and within the limits of Client's instructions, if any. The Company's sole responsibility is to its Client and this document does not exonerate parties to a transaction from exercising all their rights and obligations under the transaction documents. This document cannot be reproduced except in full, without prior written approval of the Company. Any unauthorized alteration, forgery or falsification of the content or appearance of this document is unlawful and offenders may be prosecuted to the fullest extent of the law. Unless otherwise stated the results shown in this test report refer only to the sample(s) tested.

Attention: To check the authenticity of testing / inspection report & certificate, please contact us at telephone: (86-755) 8307 1443, or email: [CN.Doccheck@sgs.com](mailto:CN.Doccheck@sgs.com)

SGS-CSTC (Shanghai) Technical Services (Shanghai) Co., Ltd.  
Testing Center - China (Shanghai) Company

3<sup>rd</sup> Building, No. 889 Yishan Road Xuhui District, Shanghai China 200233  
中国·上海·徐汇区宜山路889号3号楼 邮编: 200233

t E&E (86-21) 61402553 f E&E (86-21) 64953679 www.sgsgroup.com.cn  
t HL (86-21) 61402594 f HL (86-21) 61156899 e [sgs.china@sgs.com](mailto:sgs.china@sgs.com)

# 验证报告

No. SHAEC2116136502

日期: 2021年10月08日 第5页,共35页

样品编号	样品描述	限用物质	EDXRF 筛分结果 <sup>(1)</sup>	PHTH筛分结果 <sup>(2)</sup>	化学测试结果 <sup>(3)</sup> (mg/kg)	EU RoHS 结论	样品提交/再次提交日期
5	黑色塑料固线块	Pb	BL	---	---	符合	29 Jul 2021
		Cd	BL	---	---	符合	
		Hg	BL	---	---	符合	
		Cr(VI)▼	BL	---	---	符合	
		PBBs	BL	---	---	符合	
		PBDEs	BL	---	---	符合	
		DBP	---	IN	ND	符合	
		BBP	---	IN	ND	符合	
		DEHP	---	IN	ND	符合	
6	黑色塑料外层外被	Pb	BL	---	---	符合	29 Jul 2021
		Cd	BL	---	---	符合	
		Hg	BL	---	---	符合	
		Cr(VI)▼	BL	---	---	符合	
		PBBs	BL	---	---	符合	
		PBDEs	BL	---	---	符合	
		DBP	---	IN	ND	符合	
		BBP	---	IN	ND	符合	
		DEHP	---	IN	ND	符合	
		DIBP	---	IN	ND	符合	



Unless otherwise agreed in writing, this document is issued by the Company subject to its General Conditions of Service printed overleaf, available on request or accessible at <http://www.sgs.com/en/Terms-and-Conditions.aspx> and, for electronic format documents, subject to Terms and Conditions for Electronic Documents at <http://www.sgs.com/en/Terms-and-Conditions/Terms-e-Documents.aspx>. Attention is drawn to the limitation of liability, indemnification and jurisdiction issues defined therein. Any holder of this document is advised that information contained hereon reflects the Company's findings at the time of its intervention only and within the limits of Client's instructions, if any. The Company's sole responsibility is to its Client and this document does not exonerate parties to a transaction from exercising all their rights and obligations under the transaction documents. This document cannot be reproduced except in full, without prior written approval of the Company. Any unauthorized alteration, forgery or falsification of the content or appearance of this document is unlawful and offenders may be prosecuted to the fullest extent of the law. Unless otherwise stated the results shown in this test report refer only to the sample(s) tested.

Attention: To check the authenticity of testing / inspection report & certificate, please contact us at telephone: (86-755) 8307 1443, or email: [CN.Doccheck@sgs.com](mailto:CN.Doccheck@sgs.com)

SGS-CSTC (Shanghai) Technical Services (Shanghai) Co., Ltd.  
Testing Center (Shanghai) Company

3<sup>rd</sup> Building, No. 889 Yishan Road Xuhui District, Shanghai China 200233  
中国·上海·徐汇区宜山路889号3号楼 邮编: 200233

t E&E (86-21) 61402553 f E&E (86-21) 64953679 www.sgs.com.cn  
t HL (86-21) 61402594 f HL (86-21) 61156899 e [sgs.china@sgs.com](mailto:sgs.china@sgs.com)



## 验证报告

No. SHAEC2116136502

日期: 2021年10月08日 第6页,共35页

样品编号	样品描述	限用物质	EDXRF 筛分结果 <sup>(1)</sup>	PHTH筛分结果 <sup>(2)</sup>	化学测试结果 <sup>(3)</sup> (mg/kg)	EU RoHS 结论	样品提交/再次提交日期
7	黄/绿色塑料内层外被	Pb Cd Hg Cr(VI)▼ PBBs PBDEs DBP BBP DEHP DIBP	BL BL BL BL BL BL --- --- --- ---	--- --- --- --- --- --- IN IN IN IN	--- --- --- --- --- --- ND ND ND ND	符合 符合 符合 符合 符合 符合 符合 符合 符合 符合	29 Jul 2021
8	棕色塑料内层外被	Pb Cd Hg Cr(VI)▼ PBBs PBDEs DBP BBP DEHP DIBP	BL BL BL BL BL BL --- --- --- ---	--- --- --- --- --- --- IN IN IN IN	--- --- --- --- --- --- ND ND ND ND	符合 符合 符合 符合 符合 符合 符合 符合 符合 符合	29 Jul 2021



Unless otherwise agreed in writing, this document is issued by the Company subject to its General Conditions of Service printed overleaf, available on request or accessible at <http://www.sgs.com/en/Terms-and-Conditions.aspx> and, for electronic format documents, subject to Terms and Conditions for Electronic Documents at <http://www.sgs.com/en/Terms-and-Conditions/Terms-e-Documents.aspx>. Attention is drawn to the limitation of liability, indemnification and jurisdiction issues defined therein. Any holder of this document is advised that information contained hereon reflects the Company's findings at the time of its intervention only and within the limits of Client's instructions, if any. The Company's sole responsibility is to its Client and this document does not exonerate parties to a transaction from exercising all their rights and obligations under the transaction documents. This document cannot be reproduced except in full, without prior written approval of the Company. Any unauthorized alteration, forgery or falsification of the content or appearance of this document is unlawful and offenders may be prosecuted to the fullest extent of the law. Unless otherwise stated the results shown in this test report refer only to the sample(s) tested.

Attention: To check the authenticity of testing / inspection report & certificate, please contact us at telephone: (86-755) 8307 1443, or email: [CN.Doccheck@sgs.com](mailto:CN.Doccheck@sgs.com)

SGS-CSTC (Shanghai) Technical Services (Shanghai) Co., Ltd.  
Testing Center (China) Company

3<sup>rd</sup> Building, No. 889 Yishan Road Xuhui District, Shanghai China 200233  
中国·上海·徐汇区宜山路889号3号楼 邮编: 200233

t E&E (86-21) 61402553 f E&E (86-21) 64953679 www.sgsgroup.com.cn  
t HL (86-21) 61402594 f HL (86-21) 61156899 e [sgs.china@sgs.com](mailto:sgs.china@sgs.com)

## 验证报告

No. SHAEC2116136502

日期: 2021年10月08日 第7页,共35页

样品编号	样品描述	限用物质	EDXRF 筛分结果 <sup>(1)</sup>	PHTH筛分结果 <sup>(2)</sup>	化学测试结果 <sup>(3)</sup> (mg/kg)	EU RoHS 结论	样品提交/再次提交日期
9	蓝色塑料内层外被	Pb	BL	---	---	符合	29 Jul 2021
		Cd	BL	---	---	符合	
		Hg	BL	---	---	符合	
		Cr(VI)▼	BL	---	---	符合	
		PBBs	BL	---	---	符合	
		PBDEs	BL	---	---	符合	
		DBP	---	IN	ND	符合	
		BBP	---	IN	ND	符合	
		DEHP	---	IN	ND	符合	
10	黑色塑料外壳	Pb	BL	---	---	符合	29 Jul 2021
		Cd	BL	---	---	符合	
		Hg	BL	---	---	符合	
		Cr(VI)▼	BL	---	---	符合	
		PBBs	BL	---	---	符合	
		PBDEs	BL	---	---	符合	
		DBP	---	IN	ND	符合	
		BBP	---	IN	ND	符合	
		DEHP	---	IN	ND	符合	
		DIBP	---	IN	ND	符合	



SGS-CSTC (Shanghai) Technical Services Co., Ltd.  
Testing Center (China) Company

Unless otherwise agreed in writing, this document is issued by the Company subject to its General Conditions of Service printed overleaf, available on request or accessible at <http://www.sgs.com/en/Terms-and-Conditions.aspx> and, for electronic format documents, subject to Terms and Conditions for Electronic Documents at <http://www.sgs.com/en/Terms-and-Conditions/Terms-e-Documents.aspx>. Attention is drawn to the limitation of liability, indemnification and jurisdiction issues defined therein. Any holder of this document is advised that information contained hereon reflects the Company's findings at the time of its intervention only and within the limits of Client's instructions, if any. The Company's sole responsibility is to its Client and this document does not exonerate parties to a transaction from exercising all their rights and obligations under the transaction documents. This document cannot be reproduced except in full, without prior written approval of the Company. Any unauthorized alteration, forgery or falsification of the content or appearance of this document is unlawful and offenders may be prosecuted to the fullest extent of the law. Unless otherwise stated the results shown in this test report refer only to the sample(s) tested.

Attention: To check the authenticity of testing / inspection report & certificate, please contact us at telephone: (86-755) 8307 1443, or email: [CN.Doccheck@sgs.com](mailto:CN.Doccheck@sgs.com)

3<sup>rd</sup> Building, No. 889 Yishan Road Xuhui District, Shanghai China 200233  
中国·上海·徐汇区宜山路889号3号楼 邮编: 200233

t E&E (86-21) 61402553 f E&E (86-21) 64953679 www.sgsgroup.com.cn  
t HL (86-21) 61402594 f HL (86-21) 61156899 e [sgs.china@sgs.com](mailto:sgs.china@sgs.com)

## 验证报告

No. SHAEC2116136502

日期: 2021年10月08日 第8页,共35页

样品编号	样品描述	限用物质	EDXRF 筛分结果 <sup>(1)</sup>	PHTH筛分结果 <sup>(2)</sup>	化学测试结果 <sup>(3)</sup> (mg/kg)	EU RoHS 结论	样品提交/再次提交日期
11	棕色塑料衬套	Pb Cd Hg Cr(VI)▼ PBBs PBDEs DBP BBP DEHP DIBP	BL BL BL BL BL BL --- --- --- ---	--- --- --- --- --- --- IN IN IN IN	--- --- --- --- --- --- ND ND ND ND	符合 符合 符合 符合 符合 符合 符合 符合 符合 符合	29 Jul 2021
12	银色金属插针	Pb Cd Hg Cr(VI)▼ PBBs PBDEs DBP BBP DEHP DIBP	BL BL BL BL --- --- --- --- --- ---	--- --- --- --- --- --- --- --- --- ---	--- --- --- --- --- --- --- --- --- ---	符合 符合 符合 符合 --- --- --- --- --- ---	29 Jul 2021



Unless otherwise agreed in writing, this document is issued by the Company subject to its General Conditions of Service printed overleaf, available on request or accessible at <http://www.sgs.com/en/Terms-and-Conditions.aspx> and, for electronic format documents, subject to Terms and Conditions for Electronic Documents at <http://www.sgs.com/en/Terms-and-Conditions/Terms-e-Documents.aspx>. Attention is drawn to the limitation of liability, indemnification and jurisdiction issues defined therein. Any holder of this document is advised that information contained hereon reflects the Company's findings at the time of its intervention only and within the limits of Client's instructions, if any. The Company's sole responsibility is to its Client and this document does not exonerate parties to a transaction from exercising all their rights and obligations under the transaction documents. This document cannot be reproduced except in full, without prior written approval of the Company. Any unauthorized alteration, forgery or falsification of the content or appearance of this document is unlawful and offenders may be prosecuted to the fullest extent of the law. Unless otherwise stated the results shown in this test report refer only to the sample(s) tested.

Attention: To check the authenticity of testing / inspection report & certificate, please contact us at telephone: (86-755) 8307 1443, or email: [CN.Doccheck@sgs.com](mailto:CN.Doccheck@sgs.com)

SGS-CSTC (Shanghai) Technical Services (Shanghai) Co., Ltd.  
Testing Center (China) Company

3<sup>rd</sup> Building, No. 889 Yishan Road Xuhui District, Shanghai China 200233  
中国·上海·徐汇区宜山路889号3号楼 邮编: 200233

t E&E (86-21) 61402553 f E&E (86-21) 64953679 www.sgsgroup.com.cn  
t HL (86-21) 61402594 f HL (86-21) 61156899 e [sgs.china@sgs.com](mailto:sgs.china@sgs.com)



## 验证报告

No. SHAEC2116136502

日期: 2021年10月08日 第9页,共35页

样品编号	样品描述	限用物质	EDXRF 筛分结果 <sup>(1)</sup>	PHTH筛分结果 <sup>(2)</sup>	化学测试结果 <sup>(3)</sup> (mg/kg)	EU RoHS 结论	样品提交/再次提交日期
13	轴承上银色金属防尘盖	Pb Cd Hg Cr(VI)▼ PBBs PBDEs DBP BBP DEHP DIBP	BL BL BL BL --- --- --- --- --- ---	--- --- --- --- --- --- --- --- --- ---	--- --- --- --- --- --- --- --- --- ---	符合 符合 符合 符合 --- --- --- --- --- ---	29 Jul 2021
14	轴承上银色金属外圈	Pb Cd Hg Cr(VI)▼ PBBs PBDEs DBP BBP DEHP DIBP	BL BL BL IN --- --- --- --- --- ---	--- --- --- --- --- --- --- --- --- ---	--- --- --- ND --- --- --- --- --- ---	符合 符合 符合 符合 --- --- --- --- --- ---	29 Jul 2021



Unless otherwise agreed in writing, this document is issued by the Company subject to its General Conditions of Service printed overleaf, available on request or accessible at <http://www.sgs.com/en/Terms-and-Conditions.aspx> and, for electronic format documents, subject to Terms and Conditions for Electronic Documents at <http://www.sgs.com/en/Terms-and-Conditions/Terms-e-Documents.aspx>. Attention is drawn to the limitation of liability, indemnification and jurisdiction issues defined therein. Any holder of this document is advised that information contained hereon reflects the Company's findings at the time of its intervention only and within the limits of Client's instructions, if any. The Company's sole responsibility is to its Client and this document does not exonerate parties to a transaction from exercising all their rights and obligations under the transaction documents. This document cannot be reproduced except in full, without prior written approval of the Company. Any unauthorized alteration, forgery or falsification of the content or appearance of this document is unlawful and offenders may be prosecuted to the fullest extent of the law. Unless otherwise stated the results shown in this test report refer only to the sample(s) tested.

Attention: To check the authenticity of testing / inspection report & certificate, please contact us at telephone: (86-755) 8307 1443, or email: [CN.Doccheck@sgs.com](mailto:CN.Doccheck@sgs.com)

SGS-CTC (Shanghai) Technical Services (Shanghai) Co., Ltd.  
Testing Center - China (Shanghai) Company

3<sup>rd</sup> Building, No. 889 Yishan Road Xuhui District, Shanghai China 200233  
中国·上海·徐汇区宜山路889号3号楼 邮编: 200233

t E&E (86-21) 61402553 f E&E (86-21) 64953679 www.sgsgroup.com.cn  
t HL (86-21) 61402594 f HL (86-21) 61156899 e [sgs.china@sgs.com](mailto:sgs.china@sgs.com)

## 验证报告

No. SHAEC2116136502

日期: 2021年10月08日 第10页,共35页

样品编号	样品描述	限用物质	EDXRF 筛分结果 <sup>(1)</sup>	PHTH筛分结果 <sup>(2)</sup>	化学测试结果 <sup>(3)</sup> (mg/kg)	EU RoHS 结论	样品提交/再次提交日期
15	外壳上蓝色涂层	Pb	BL	---	---	符合	29 Jul 2021
		Cd	BL	---	---	符合	
		Hg	BL	---	---	符合	
		Cr(VI)▼	BL	---	---	符合	
		PBBs	BL	---	---	符合	
		PBDEs	BL	---	---	符合	
		DBP	---	IN	ND	符合	
		BBP	---	IN	ND	符合	
		DEHP	---	IN	216	符合	
		DIBP	---	IN	ND	符合	
16	外壳上银色金属基材	Pb	BL	---	---	符合	29 Jul 2021
		Cd	BL	---	---	符合	
		Hg	BL	---	---	符合	
		Cr(VI)▼	BL	---	---	符合	
		PBBs	---	---	---	---	
		PBDEs	---	---	---	---	
		DBP	---	---	---	---	
		BBP	---	---	---	---	
		DEHP	---	---	---	---	
		DIBP	---	---	---	---	



Unless otherwise agreed in writing, this document is issued by the Company subject to its General Conditions of Service printed overleaf, available on request or accessible at <http://www.sgs.com/en/Terms-and-Conditions.aspx> and, for electronic format documents, subject to Terms and Conditions for Electronic Documents at <http://www.sgs.com/en/Terms-and-Conditions/Terms-e-Documents.aspx>. Attention is drawn to the limitation of liability, indemnification and jurisdiction issues defined therein. Any holder of this document is advised that information contained hereon reflects the Company's findings at the time of its intervention only and within the limits of Client's instructions, if any. The Company's sole responsibility is to its Client and this document does not exonerate parties to a transaction from exercising all their rights and obligations under the transaction documents. This document cannot be reproduced except in full, without prior written approval of the Company. Any unauthorized alteration, forgery or falsification of the content or appearance of this document is unlawful and offenders may be prosecuted to the fullest extent of the law. Unless otherwise stated the results shown in this test report refer only to the sample(s) tested.

Attention: To check the authenticity of testing / inspection report & certificate, please contact us at telephone: (86-755) 8307 1443, or email: [CN.Doccheck@sgs.com](mailto:CN.Doccheck@sgs.com)

3<sup>rd</sup> Building, No. 889 Yishan Road Xuhui District, Shanghai China 200233 t E&E (86-21) 61402553 f E&E (86-21) 64953679 www.sgsgroup.com.cn  
中国·上海·徐汇区宜山路889号3号楼 邮编: 200233 t HL (86-21) 61402594 f HL (86-21) 61156899 e [sgs.china@sgs.com](mailto:sgs.china@sgs.com)

## 验证报告

No. SHAEC2116136502

日期: 2021年10月08日 第11页,共35页

样品编号	样品描述	限用物质	EDXRF 筛分结果 <sup>(1)</sup>	PHTH筛分结果 <sup>(2)</sup>	化学测试结果 <sup>(3)</sup> (mg/kg)	EU RoHS 结论	样品提交/再次提交日期
17	银色金属轴	Pb Cd Hg Cr(VI)▼ PBBs PBDEs DBP BBP DEHP DIBP	BL BL BL IN --- --- --- --- --- ---	--- --- --- --- --- --- --- --- --- ---	--- --- --- ND --- --- --- --- --- ---	符合 符合 符合 符合 --- --- --- --- --- ---	29 Jul 2021
18	银色金属衬套	Pb Cd Hg Cr(VI)▼ PBBs PBDEs DBP BBP DEHP DIBP	BL BL BL IN --- --- --- --- --- ---	--- --- --- --- --- --- --- --- --- ---	--- --- --- ND --- --- --- --- --- ---	符合 符合 符合 符合 --- --- --- --- --- ---	29 Jul 2021



SGS-CSTC (Shanghai) Technical Services Co., Ltd.  
Testing Center (China) Co., Ltd.

Unless otherwise agreed in writing, this document is issued by the Company subject to its General Conditions of Service printed overleaf, available on request or accessible at <http://www.sgs.com/en/Terms-and-Conditions.aspx> and, for electronic format documents, subject to Terms and Conditions for Electronic Documents at <http://www.sgs.com/en/Terms-and-Conditions/Terms-e-Documents.aspx>. Attention is drawn to the limitation of liability, indemnification and jurisdiction issues defined therein. Any holder of this document is advised that information contained hereon reflects the Company's findings at the time of its intervention only and within the limits of Client's instructions, if any. The Company's sole responsibility is to its Client and this document does not exonerate parties to a transaction from exercising all their rights and obligations under the transaction documents. This document cannot be reproduced except in full, without prior written approval of the Company. Any unauthorized alteration, forgery or falsification of the content or appearance of this document is unlawful and offenders may be prosecuted to the fullest extent of the law. Unless otherwise stated the results shown in this test report refer only to the sample(s) tested.

Attention: To check the authenticity of testing / inspection report & certificate, please contact us at telephone: (86-755) 8307 1443, or email: [CN.Doccheck@sgs.com](mailto:CN.Doccheck@sgs.com)

3<sup>rd</sup> Building, No. 889 Yishan Road Xuhui District, Shanghai China 200233  
中国·上海·徐汇区宜山路889号3号楼 邮编: 200233

t E&E (86-21) 61402553 f E&E (86-21) 64953679 www.sgsgroup.com.cn  
t HL (86-21) 61402594 f HL (86-21) 61156899 e [sgs.china@sgs.com](mailto:sgs.china@sgs.com)

## 验证报告

No. SHAEC2116136502

日期: 2021年10月08日 第12页,共35页

样品编号	样品描述	限用物质	EDXRF 筛分结果 <sup>(1)</sup>	PHTH筛分结果 <sup>(2)</sup>	化学测试结果 <sup>(3)</sup> (mg/kg)	EU RoHS 结论	样品提交/再次提交日期
19	黑色金属卡簧	Pb Cd Hg Cr(VI)▼ PBBs PBDEs DBP BBP DEHP DIBP	BL BL BL IN --- --- --- --- --- ---	--- --- --- --- --- --- --- --- --- ---	--- --- --- ND --- --- --- --- --- ---	符合 符合 符合 符合 --- --- --- --- --- ---	29 Jul 2021
20	PCB上白色胶	Pb Cd Hg Cr(VI)▼ PBBs PBDEs DBP BBP DEHP DIBP	BL BL BL BL BL BL --- --- --- ---	--- --- --- --- --- --- IN IN IN IN	--- --- --- --- --- --- ND ND ND ND	符合 符合 符合 符合 符合 符合 符合 符合 符合 符合	29 Jul 2021



SGS-CSTC (Shanghai) Technical Services Co., Ltd.  
Testing Center (China) Company

Unless otherwise agreed in writing, this document is issued by the Company subject to its General Conditions of Service printed overleaf, available on request or accessible at <http://www.sgs.com/en/Terms-and-Conditions.aspx> and, for electronic format documents, subject to Terms and Conditions for Electronic Documents at <http://www.sgs.com/en/Terms-and-Conditions/Terms-e-Documents.aspx>. Attention is drawn to the limitation of liability, indemnification and jurisdiction issues defined therein. Any holder of this document is advised that information contained hereon reflects the Company's findings at the time of its intervention only and within the limits of Client's instructions, if any. The Company's sole responsibility is to its Client and this document does not exonerate parties to a transaction from exercising all their rights and obligations under the transaction documents. This document cannot be reproduced except in full, without prior written approval of the Company. Any unauthorized alteration, forgery or falsification of the content or appearance of this document is unlawful and offenders may be prosecuted to the fullest extent of the law. Unless otherwise stated the results shown in this test report refer only to the sample(s) tested.

Attention: To check the authenticity of testing / inspection report & certificate, please contact us at telephone: (86-755) 8307 1443, or email: [CN.Doccheck@sgs.com](mailto:CN.Doccheck@sgs.com)

3<sup>rd</sup> Building, No. 889 Yishan Road Xuhui District, Shanghai China 200233  
中国·上海·徐汇区宜山路889号3号楼 邮编: 200233

t E&E (86-21) 61402553 f E&E (86-21) 64953679 www.sgsgroup.com.cn  
t HL (86-21) 61402594 f HL (86-21) 61156899 e [sgs.china@sgs.com](mailto:sgs.china@sgs.com)

## 验证报告

No. SHAEC2116136502

日期: 2021年10月08日 第13页,共35页

样品编号	样品描述	限用物质	EDXRF 筛分结果 <sup>(1)</sup>	PHTH筛分结果 <sup>(2)</sup>	化学测试结果 <sup>(3)</sup> (mg/kg)	EU RoHS 结论	样品提交/再次提交日期
21	PCB 电容上棕色塑料外壳	Pb Cd Hg Cr(VI)▼ PBBs PBDEs DBP BBP DEHP DIBP	BL BL BL BL BL BL --- --- --- ---	--- --- --- --- --- --- IN IN IN IN	--- --- --- --- --- --- ND ND ND ND	符合 符合 符合 符合 符合 符合 符合 符合 符合 符合	29 Jul 2021
22	PCB 电解电容上棕色塑料外壳	Pb Cd Hg Cr(VI)▼ PBBs PBDEs DBP BBP DEHP DIBP	BL BL BL BL BL BL --- --- --- ---	--- --- --- --- --- --- IN IN IN IN	--- --- --- --- --- --- ND ND ND ND	符合 符合 符合 符合 符合 符合 符合 符合 符合 符合	29 Jul 2021



SGS-CSTC (Shanghai) Technical Services Co., Ltd.  
Testing Center - China (Shanghai) Company

Unless otherwise agreed in writing, this document is issued by the Company subject to its General Conditions of Service printed overleaf, available on request or accessible at <http://www.sgs.com/en/Terms-and-Conditions.aspx> and, for electronic format documents, subject to Terms and Conditions for Electronic Documents at <http://www.sgs.com/en/Terms-and-Conditions/Terms-e-Documents.aspx>. Attention is drawn to the limitation of liability, indemnification and jurisdiction issues defined therein. Any holder of this document is advised that information contained hereon reflects the Company's findings at the time of its intervention only and within the limits of Client's instructions, if any. The Company's sole responsibility is to its Client and this document does not exonerate parties to a transaction from exercising all their rights and obligations under the transaction documents. This document cannot be reproduced except in full, without prior written approval of the Company. Any unauthorized alteration, forgery or falsification of the content or appearance of this document is unlawful and offenders may be prosecuted to the fullest extent of the law. Unless otherwise stated the results shown in this test report refer only to the sample(s) tested.  
Attention: To check the authenticity of testing / inspection report & certificate, please contact us at telephone: (86-755) 8307 1443, or email: [CN.Doccheck@sgs.com](mailto:CN.Doccheck@sgs.com)

3<sup>rd</sup> Building, No. 889 Yishan Road Xuhui District, Shanghai China 200233  
中国·上海·徐汇区宜山路889号3号楼 邮编: 200233

t E&E (86-21) 61402553 f E&E (86-21) 64953679 www.sgsgroup.com.cn  
t HL (86-21) 61402594 f HL (86-21) 61156899 e [sgs.china@sgs.com](mailto:sgs.china@sgs.com)



## 验证报告

No. SHAEC2116136502

日期: 2021年10月08日 第14页,共35页

样品编号	样品描述	限用物质	EDXRF 筛分结果 <sup>(1)</sup>	PHTH筛分结果 <sup>(2)</sup>	化学测试结果 <sup>(3)</sup> (mg/kg)	EU RoHS 结论	样品提交/再次提交日期
23	PCB上黑色IC本体	Pb Cd Hg Cr(VI)▼ PBBs PBDEs DBP BBP DEHP DIBP	BL BL BL BL IN IN --- --- --- ---	--- --- --- --- --- --- IN IN IN IN	--- --- --- --- ND ND ND ND ND ND	符合 符合 符合 符合 符合 符合 符合 符合 符合 符合	29 Jul 2021
24	PCB电容上黄色塑料外壳	Pb Cd Hg Cr(VI)▼ PBBs PBDEs DBP BBP DEHP DIBP	BL BL BL BL IN IN --- --- --- ---	--- --- --- --- --- --- IN IN IN IN	--- --- --- --- ND ND ND ND ND ND	符合 符合 符合 符合 符合 符合 符合 符合 符合 符合	29 Jul 2021



Unless otherwise agreed in writing, this document is issued by the Company subject to its General Conditions of Service printed overleaf, available on request or accessible at <http://www.sgs.com/en/Terms-and-Conditions.aspx> and, for electronic format documents, subject to Terms and Conditions for Electronic Documents at <http://www.sgs.com/en/Terms-and-Conditions/Terms-e-Documents.aspx>. Attention is drawn to the limitation of liability, indemnification and jurisdiction issues defined therein. Any holder of this document is advised that information contained hereon reflects the Company's findings at the time of its intervention only and within the limits of Client's instructions, if any. The Company's sole responsibility is to its Client and this document does not exonerate parties to a transaction from exercising all their rights and obligations under the transaction documents. This document cannot be reproduced except in full, without prior written approval of the Company. Any unauthorized alteration, forgery or falsification of the content or appearance of this document is unlawful and offenders may be prosecuted to the fullest extent of the law. Unless otherwise stated the results shown in this test report refer only to the sample(s) tested.

Attention: To check the authenticity of testing / inspection report & certificate, please contact us at telephone: (86-755) 8307 1443, or email: [CN.Doccheck@sgs.com](mailto:CN.Doccheck@sgs.com)

3<sup>rd</sup> Building, No. 889 Yishan Road Xuhui District, Shanghai China 200233  
中国·上海·徐汇区宜山路889号3号楼 邮编: 200233

t E&E (86-21) 61402553 f E&E (86-21) 64953679 www.sgsgroup.com.cn  
t HL (86-21) 61402594 f HL (86-21) 61156899 e [sgs.china@sgs.com](mailto:sgs.china@sgs.com)

## 验证报告

No. SHAEC2116136502

日期: 2021年10月08日 第15页,共35页

样品编号	样品描述	限用物质	EDXRF 筛分结果 <sup>(1)</sup>	PHTH筛分结果 <sup>(2)</sup>	化学测试结果 <sup>(3)</sup> (mg/kg)	EU RoHS 结论	样品提交/再次提交日期
25	PCB 电容上透明固体	Pb Cd Hg Cr(VI)▼ PBBs PBDEs DBP BBP DEHP DIBP	BL BL BL BL IN IN --- --- --- ---	--- --- --- --- --- --- IN IN IN IN	--- --- --- --- ND ND ND ND ND ND	符合 符合 符合 符合 符合 符合 符合 符合 符合 符合	29 Jul 2021
26	PCB上蓝色电容本体	Pb Cd Hg Cr(VI)▼ PBBs PBDEs DBP BBP DEHP DIBP	BL BL BL BL BL BL --- --- --- ---	--- --- --- --- --- --- IN IN IN IN	--- --- --- --- --- --- ND ND ND ND	符合 符合 符合 符合 符合 符合 符合 符合 符合 符合	29 Jul 2021



Unless otherwise agreed in writing, this document is issued by the Company subject to its General Conditions of Service printed overleaf, available on request or accessible at <http://www.sgs.com/en/Terms-and-Conditions.aspx> and, for electronic format documents, subject to Terms and Conditions for Electronic Documents at <http://www.sgs.com/en/Terms-and-Conditions/Terms-e-Documents.aspx>. Attention is drawn to the limitation of liability, indemnification and jurisdiction issues defined therein. Any holder of this document is advised that information contained hereon reflects the Company's findings at the time of its intervention only and within the limits of Client's instructions, if any. The Company's sole responsibility is to its Client and this document does not exonerate parties to a transaction from exercising all their rights and obligations under the transaction documents. This document cannot be reproduced except in full, without prior written approval of the Company. Any unauthorized alteration, forgery or falsification of the content or appearance of this document is unlawful and offenders may be prosecuted to the fullest extent of the law. Unless otherwise stated the results shown in this test report refer only to the sample(s) tested.

Attention: To check the authenticity of testing / inspection report & certificate, please contact us at telephone: (86-755) 8307 1443, or email: [CN.Doccheck@sgs.com](mailto:CN.Doccheck@sgs.com)

SGS-CSTC (Shanghai) Technical Services (Shanghai) Co., Ltd.  
Testing Center - China (Shanghai) Company

3<sup>rd</sup> Building, No. 889 Yishan Road Xuhui District, Shanghai China 200233  
中国·上海·徐汇区宜山路889号3号楼 邮编: 200233

t E&E (86-21) 61402553 f E&E (86-21) 64953679 www.sgsgroup.com.cn  
t HL (86-21) 61402594 f HL (86-21) 61156899 e [sgs.china@sgs.com](mailto:sgs.china@sgs.com)

样品编号	样品描述	限用物质	EDXRF 筛分结果 <sup>(1)</sup>	PHTH筛分结果 <sup>(2)</sup>	化学测试结果 <sup>(3)</sup> (mg/kg)	EU RoHS 结论	样品提交/再次提交日期
27	PCB上黑色电容本体	Pb Cd Hg Cr(VI)▼ PBBs PBDEs DBP BBP DEHP DIBP	BL BL BL BL BL BL --- --- --- ---	--- --- --- --- --- --- IN IN IN IN	--- --- --- --- --- --- ND ND ND ND	符合 符合 符合 符合 符合 符合 符合 符合 符合 符合	29 Jul 2021
28	PCB变压器上黑色塑料胶带	Pb Cd Hg Cr(VI)▼ PBBs PBDEs DBP BBP DEHP DIBP	BL BL BL BL BL BL --- --- --- ---	--- --- --- --- --- --- IN IN IN IN	--- --- --- --- --- --- ND ND ND ND	符合 符合 符合 符合 符合 符合 符合 符合 符合 符合	29 Jul 2021



## 验证报告

No. SHAEC2116136502

日期: 2021年10月08日 第17页,共35页

样品编号	样品描述	限用物质	EDXRF 筛分结果 <sup>(1)</sup>	PHTH筛分结果 <sup>(2)</sup>	化学测试结果 <sup>(3)</sup> (mg/kg)	EU RoHS 结论	样品提交/再次提交日期
29	PCB变压器外壳上黄色塑料粘纸	Pb Cd Hg Cr(VI)▼ PBBs PBDEs DBP BBP DEHP DIBP	BL BL BL BL BL BL --- --- --- ---	--- --- --- --- --- --- IN IN IN IN	--- --- --- --- --- --- ND ND ND ND	符合 符合 符合 符合 符合 符合 符合 符合 符合 符合	29 Jul 2021
30	PCB上黑色IC本体	Pb Cd Hg Cr(VI)▼ PBBs PBDEs DBP BBP DEHP DIBP	BL BL BL BL BL BL --- --- --- ---	--- --- --- --- --- --- IN IN IN IN	--- --- --- --- --- --- ND ND ND ND	符合 符合 符合 符合 符合 符合 符合 符合 符合 符合	29 Jul 2021



SGS-CSTC (Shanghai) Technical Services Co., Ltd.  
Testing Center - China (Shanghai) Company

Unless otherwise agreed in writing, this document is issued by the Company subject to its General Conditions of Service printed overleaf, available on request or accessible at <http://www.sgs.com/en/Terms-and-Conditions.aspx> and, for electronic format documents, subject to Terms and Conditions for Electronic Documents at <http://www.sgs.com/en/Terms-and-Conditions/Terms-e-Documents.aspx>. Attention is drawn to the limitation of liability, indemnification and jurisdiction issues defined therein. Any holder of this document is advised that information contained hereon reflects the Company's findings at the time of its intervention only and within the limits of Client's instructions, if any. The Company's sole responsibility is to its Client and this document does not exonerate parties to a transaction from exercising all their rights and obligations under the transaction documents. This document cannot be reproduced except in full, without prior written approval of the Company. Any unauthorized alteration, forgery or falsification of the content or appearance of this document is unlawful and offenders may be prosecuted to the fullest extent of the law. Unless otherwise stated the results shown in this test report refer only to the sample(s) tested.  
Attention: To check the authenticity of testing / inspection report & certificate, please contact us at telephone: (86-755) 8307 1443, or email: [CN.Doccheck@sgs.com](mailto:CN.Doccheck@sgs.com)

3<sup>rd</sup> Building, No. 889 Yishan Road Xuhui District, Shanghai China 200233  
中国·上海·徐汇区宜山路889号3号楼 邮编: 200233

t E&E (86-21) 61402553 f E&E (86-21) 64953679 www.sgsgroup.com.cn  
t HL (86-21) 61402594 f HL (86-21) 61156899 e [sgs.china@sgs.com](mailto:sgs.china@sgs.com)

## 验证报告

No. SHAEC2116136502

日期: 2021年10月08日 第18页,共35页

样品编号	样品描述	限用物质	EDXRF 筛分结果 <sup>(1)</sup>	PHTH筛分结果 <sup>(2)</sup>	化学测试结果 <sup>(3)</sup> (mg/kg)	EU RoHS 结论	样品提交/再次提交日期
31	PCB上黑色IC本体	Pb	BL	---	---	符合	29 Jul 2021
		Cd	BL	---	---	符合	
		Hg	BL	---	---	符合	
		Cr(VI)▼	BL	---	---	符合	
		PBBs	BL	---	---	符合	
		PBDEs	BL	---	---	符合	
		DBP	---	IN	ND	符合	
		BBP	---	IN	ND	符合	
		DEHP	---	IN	ND	符合	
32	PCB上黑色IC本体	Pb	BL	---	---	符合	29 Jul 2021
		Cd	BL	---	---	符合	
		Hg	BL	---	---	符合	
		Cr(VI)▼	BL	---	---	符合	
		PBBs	BL	---	---	符合	
		PBDEs	BL	---	---	符合	
		DBP	---	IN	ND	符合	
		BBP	---	IN	ND	符合	
		DEHP	---	IN	ND	符合	
		DIBP	---	IN	ND	符合	



Unless otherwise agreed in writing, this document is issued by the Company subject to its General Conditions of Service printed overleaf, available on request or accessible at <http://www.sgs.com/en/Terms-and-Conditions.aspx> and, for electronic format documents, subject to Terms and Conditions for Electronic Documents at <http://www.sgs.com/en/Terms-and-Conditions/Terms-e-Documents.aspx>. Attention is drawn to the limitation of liability, indemnification and jurisdiction issues defined therein. Any holder of this document is advised that information contained hereon reflects the Company's findings at the time of its intervention only and within the limits of Client's instructions, if any. The Company's sole responsibility is to its Client and this document does not exonerate parties to a transaction from exercising all their rights and obligations under the transaction documents. This document cannot be reproduced except in full, without prior written approval of the Company. Any unauthorized alteration, forgery or falsification of the content or appearance of this document is unlawful and offenders may be prosecuted to the fullest extent of the law. Unless otherwise stated the results shown in this test report refer only to the sample(s) tested.

Attention: To check the authenticity of testing / inspection report & certificate, please contact us at telephone: (86-755) 8307 1443, or email: [CN.Doccheck@sgs.com](mailto:CN.Doccheck@sgs.com)

SGS-CSTC (Shanghai) Technical Services (Shanghai) Co., Ltd.  
Testing Center - China (Shanghai) Company

3<sup>rd</sup> Building, No. 889 Yishan Road Xuhui District, Shanghai China 200233  
中国·上海·徐汇区宜山路889号3号楼 邮编: 200233

t E&E (86-21) 61402553 f E&E (86-21) 64953679 www.sgsgroup.com.cn  
t HL (86-21) 61402594 f HL (86-21) 61156899 e [sgs.china@sgs.com](mailto:sgs.china@sgs.com)



## 验证报告

No. SHAEC2116136502

日期: 2021年10月08日 第19页,共35页

样品编号	样品描述	限用物质	EDXRF 筛分结果 <sup>(1)</sup>	PHTH筛分结果 <sup>(2)</sup>	化学测试结果 <sup>(3)</sup> (mg/kg)	EU RoHS 结论	样品提交/再次提交日期
33	PCB上银色金属连接片	Pb Cd Hg Cr(VI)▼ PBBs PBDEs DBP BBP DEHP DIBP	BL BL BL BL --- --- --- --- --- ---	--- --- --- --- --- --- --- --- --- ---	--- --- --- --- --- --- --- --- --- ---	符合 符合 符合 符合 --- --- --- --- --- ---	29 Jul 2021
34	PCB上银色金属焊锡	Pb Cd Hg Cr(VI)▼ PBBs PBDEs DBP BBP DEHP DIBP	BL BL BL BL --- --- --- --- --- ---	--- --- --- --- --- --- --- --- --- ---	--- --- --- --- --- --- --- --- --- ---	符合 符合 符合 符合 --- --- --- --- --- ---	29 Jul 2021



Unless otherwise agreed in writing, this document is issued by the Company subject to its General Conditions of Service printed overleaf, available on request or accessible at <http://www.sgs.com/en/Terms-and-Conditions.aspx> and, for electronic format documents, subject to Terms and Conditions for Electronic Documents at <http://www.sgs.com/en/Terms-and-Conditions/Terms-e-Documents.aspx>. Attention is drawn to the limitation of liability, indemnification and jurisdiction issues defined therein. Any holder of this document is advised that information contained hereon reflects the Company's findings at the time of its intervention only and within the limits of Client's instructions, if any. The Company's sole responsibility is to its Client and this document does not exonerate parties to a transaction from exercising all their rights and obligations under the transaction documents. This document cannot be reproduced except in full, without prior written approval of the Company. Any unauthorized alteration, forgery or falsification of the content or appearance of this document is unlawful and offenders may be prosecuted to the fullest extent of the law. Unless otherwise stated the results shown in this test report refer only to the sample(s) tested.

Attention: To check the authenticity of testing / inspection report & certificate, please contact us at telephone: (86-755) 8307 1443, or email: [CN.Doccheck@sgs.com](mailto:CN.Doccheck@sgs.com)

SGS-CSTC (Shanghai) Technical Services (Shanghai) Co., Ltd.  
Testing Center - China (Shanghai) Company

3<sup>rd</sup> Building, No. 889 Yishan Road Xuhui District, Shanghai China 200233  
中国·上海·徐汇区宜山路889号3号楼 邮编: 200233

t E&E (86-21) 61402553 f E&E (86-21) 64953679 www.sgsgroup.com.cn  
t HL (86-21) 61402594 f HL (86-21) 61156899 e [sgs.china@sgs.com](mailto:sgs.china@sgs.com)

## 验证报告

No. SHAEC2116136502

日期: 2021年10月08日 第20页,共35页

样品编号	样品描述	限用物质	EDXRF 筛分结果 <sup>(1)</sup>	PHTH筛分结果 <sup>(2)</sup>	化学测试结果 <sup>(3)</sup> (mg/kg)	EU RoHS 结论	样品提交/再次提交日期
35	绿色PCB本体	Pb	BL	---	---	符合	29 Jul 2021
		Cd	BL	---	---	符合	
		Hg	BL	---	---	符合	
		Cr(VI)▼	BL	---	---	符合	
		PBBs	IN	---	---	Pending	
		PBDEs	IN	---	---	Pending	
		DBP	---	IN	ND	符合	
		BBP	---	IN	ND	符合	
		DEHP	---	IN	ND	符合	
		DIBP	---	IN	ND	符合	
36	银色金属螺栓	Pb	BL	---	---	符合	29 Jul 2021
		Cd	BL	---	---	符合	
		Hg	BL	---	---	符合	
		Cr(VI)▼	IN	---	ND	符合	
		PBBs	---	---	---	---	
		PBDEs	---	---	---	---	
		DBP	---	---	---	---	
		BBP	---	---	---	---	
		DEHP	---	---	---	---	
		DIBP	---	---	---	---	



SGS-CSTC Shanghai Technical Services Co., Ltd.  
Testing Center (Shanghai) Co., Ltd.

Unless otherwise agreed in writing, this document is issued by the Company subject to its General Conditions of Service printed overleaf, available on request or accessible at <http://www.sgs.com/en/Terms-and-Conditions.aspx> and, for electronic format documents, subject to Terms and Conditions for Electronic Documents at <http://www.sgs.com/en/Terms-and-Conditions/Terms-e-Documents.aspx>. Attention is drawn to the limitation of liability, indemnification and jurisdiction issues defined therein. Any holder of this document is advised that information contained hereon reflects the Company's findings at the time of its intervention only and within the limits of Client's instructions, if any. The Company's sole responsibility is to its Client and this document does not exonerate parties to a transaction from exercising all their rights and obligations under the transaction documents. This document cannot be reproduced except in full, without prior written approval of the Company. Any unauthorized alteration, forgery or falsification of the content or appearance of this document is unlawful and offenders may be prosecuted to the fullest extent of the law. Unless otherwise stated the results shown in this test report refer only to the sample(s) tested.

Attention: To check the authenticity of testing / inspection report & certificate, please contact us at telephone: (86-755) 8307 1443, or email: [CN.Doccheck@sgs.com](mailto:CN.Doccheck@sgs.com)

3<sup>rd</sup> Building, No. 889 Yishan Road Xuhui District, Shanghai China 200233  
中国·上海·徐汇区宜山路889号3号楼 邮编: 200233

t E&E (86-21) 61402553 f E&E (86-21) 64953679 www.sgsgroup.com.cn  
t HL (86-21) 61402594 f HL (86-21) 61156899 e [sgs.china@sgs.com](mailto:sgs.china@sgs.com)

## 验证报告

No. SHAEC2116136502

日期: 2021年10月08日 第21页,共35页

### 备注

- (1) (a) 对于限用物质是 PBBs 和 PBDEs, 其结果显示的是总 Br 含量; 限用物质是 Cr(VI), 其结果显示的是总 Cr 含量。
- (b) EDXRF 所得的测试结果只作初步筛选, 如果 EDXRF 结果超出 IEC62321-3-1:2013 所规定的警戒范围, 我们建议客户用更精确的化学测试方法测试样品, 如用 ICP-OES 测试 Cd, Pb, Hg; 用 UV-Vis 测试 Cr(VI); 用 GC-MS 测试 PBBs 和 PBDEs (单位: mg/kg)。

元素	聚合物	金属	复合材料
Cd	$BL \leq (70-3 \sigma) < X < (130+3 \sigma) \leq OL$	$BL \leq (70-3 \sigma) < X < (130+3 \sigma) \leq OL$	$LOD < X < (150+3 \sigma) \leq OL$
Pb	$BL \leq (700-3 \sigma) < X < (1300+3 \sigma) \leq OL$	$BL \leq (700-3 \sigma) < X < (1300+3 \sigma) \leq OL$	$BL \leq (500-3 \sigma) < X < (1500+3 \sigma) \leq OL$
Hg	$BL \leq (700-3 \sigma) < X < (1300+3 \sigma) \leq OL$	$BL \leq (700-3 \sigma) < X < (1300+3 \sigma) \leq OL$	$BL \leq (500-3 \sigma) < X < (1500+3 \sigma) \leq OL$
Br	$BL \leq (300-3 \sigma) < X$	不适用	$BL \leq (250-3 \sigma) < X$
Cr	$BL \leq (700-3 \sigma) < X$	$BL \leq (700-3 \sigma) < X$	$BL \leq (500-3 \sigma) < X$

(c) BL = 低于限度, OL = 超出限度, IN = 不确定, LOD = 检测限。

(d) 对于复合材料, XRF 筛选测试 RoHS 元素所得数据可能与样品中实际含量不同。

- (2) PHTH 筛分结果只作初步筛选, 如果测试结果超出下表所规定的警戒范围, 我们采用更精确的化学测试方法测试样品, 用 GC-MS 测试 DBP、BBP、DEHP 和 DIBP (单位: mg/kg)。

化合物	聚合物
DBP	$BL \leq 600 < X$
BBP	$BL \leq 600 < X$
DEHP	$BL \leq 600 < X$
DIBP	$BL \leq 600 < X$

(a) mg/kg = 0.0001%, MDL=方法检测限, ND =未检出(低于 MDL), --- =不适用, - = 无清单编号。

(b) 化学测试方法的表达单位和方法检测限

测试项目	Pb	Cd	Hg	DBP	BBP	DEHP	DIBP
单位	mg/kg	mg/kg	mg/kg	mg/kg	mg/kg	mg/kg	mg/kg
方法检测限	10	10	10	100	100	100	100

任何一种 PBBs 和 PBDEs 的方法检测限是 100 mg/kg;

聚合物, 复合材料和皮革样品中 Cr(VI)的方法检测限是 10 mg/kg。

金属样品中 Cr(VI)的方法检测限是 0.10μg/cm²。



Unless otherwise agreed in writing, this document is issued by the Company subject to its General Conditions of Service printed overleaf, available on request or accessible at <http://www.sgs.com/en/Terms-and-Conditions.aspx> and, for electronic format documents, subject to Terms and Conditions for Electronic Documents at <http://www.sgs.com/en/Terms-and-Conditions/Terms-e-Documents.aspx>. Attention is drawn to the limitation of liability, indemnification and jurisdiction issues defined therein. Any holder of this document is advised that information contained hereon reflects the Company's findings at the time of its intervention only and within the limits of Client's instructions, if any. The Company's sole responsibility is to its Client and this document does not exonerate parties to a transaction from exercising all their rights and obligations under the transaction documents. This document cannot be reproduced except in full, without prior written approval of the Company. Any unauthorized alteration, forgery or falsification of the content or appearance of this document is unlawful and offenders may be prosecuted to the fullest extent of the law. Unless otherwise stated the results shown in this test report refer only to the sample(s) tested.

Attention: To check the authenticity of testing / inspection report & certificate, please contact us at telephone: (86-755) 8307 1443, or email: [CN.Doccheck@sgs.com](mailto:CN.Doccheck@sgs.com)

3<sup>rd</sup> Building, No. 889 Yishan Road Xuhui District, Shanghai China 200233  
中国·上海·徐汇区宜山路889号3号楼 邮编: 200233

tE&E (86-21) 61402553 fE&E (86-21) 64953679 www.sgsgroup.com.cn  
tHL (86-21) 61402594 fHL (86-21) 61156899 e [sgs.china@sgs.com](mailto:sgs.china@sgs.com)

## 验证报告

No. SHAEC2116136502

日期: 2021年10月08日 第22页,共35页

(c) \* = 金属样品中

- a. 当六价铬的浓度高于  $0.13 \mu\text{g}/\text{cm}^2$  时, 样品为阳性, 即含有六价铬;
- b. 当六价铬的浓度为 ND(低于  $0.10 \mu\text{g}/\text{cm}^2$ ) 时, 样品为阴性, 即未检测到六价铬;
- c. 当六价铬的浓度介于  $0.10 \mu\text{g}/\text{cm}^2$  与  $0.13 \mu\text{g}/\text{cm}^2$  之间时, 无法直接判定是否检测到六价铬, 因不同个体的样品表面差异可能会影响测定结果;

由于未获知样品的存储条件和生产日期, 样品的六价铬测试结果仅能代表测试时样品含六价铬的状态。

(4) RoHS 指令中限制物质及均质材料中最大允许浓度值: Cd: 0.01%,

Pb/Hg/Cr(VI)/PBBs/PBDEs/DEHP/DBP /BBP/DIBP: 0.1%, 限值引用自 RoHS 指令(EU) 2015/863。

IEC 62321 系列等同于 EN 62321 系列

[https://www.cenelec.eu/dyn/www/f?p=104:30:1742232870351101:::FSP\\_ORG\\_ID,FSP\\_LANG\\_ID:1258637,25](https://www.cenelec.eu/dyn/www/f?p=104:30:1742232870351101:::FSP_ORG_ID,FSP_LANG_ID:1258637,25)

除非另有说明, 此报告结果仅对测试的样品负责。本报告未经本公司书面许可, 不可部分复制。检测报告仅用于客户科研、教学、内部质量控制、产品研发等目的, 仅供内部参考。



SGS-CSTC (Shanghai) Co., Ltd.  
Testing Center - China (Shanghai) Co., Ltd.

Unless otherwise agreed in writing, this document is issued by the Company subject to its General Conditions of Service printed overleaf, available on request or accessible at <http://www.sgs.com/en/Terms-and-Conditions.aspx> and, for electronic format documents, subject to Terms and Conditions for Electronic Documents at <http://www.sgs.com/en/Terms-and-Conditions/Terms-e-Documents.aspx>. Attention is drawn to the limitation of liability, indemnification and jurisdiction issues defined therein. Any holder of this document is advised that information contained hereon reflects the Company's findings at the time of its intervention only and within the limits of Client's instructions, if any. The Company's sole responsibility is to its Client and this document does not exonerate parties to a transaction from exercising all their rights and obligations under the transaction documents. This document cannot be reproduced except in full, without prior written approval of the Company. Any unauthorized alteration, forgery or falsification of the content or appearance of this document is unlawful and offenders may be prosecuted to the fullest extent of the law. Unless otherwise stated the results shown in this test report refer only to the sample(s) tested.

Attention: To check the authenticity of testing / inspection report & certificate, please contact us at telephone: (86-755) 8307 1443, or email: [CN.Doccheck@sgs.com](mailto:CN.Doccheck@sgs.com)

3<sup>rd</sup> Building, No. 889 Yishan Road Xuhui District, Shanghai China 200233  
中国·上海·徐汇区宜山路889号3号楼 邮编: 200233

t E&E (86-21) 61402553 f E&E (86-21) 64953679 www.sgsgroup.com.cn  
t HL (86-21) 61402594 f HL (86-21) 61156899 e [sgs.china@sgs.com](mailto:sgs.china@sgs.com)

## 验证报告

No. SHAEC2116136502

日期: 2021年10月08日 第23页,共35页

样品照片:



SGS-CTC (Shanghai) Co., Ltd.  
Testing Center-Client's Laboratory

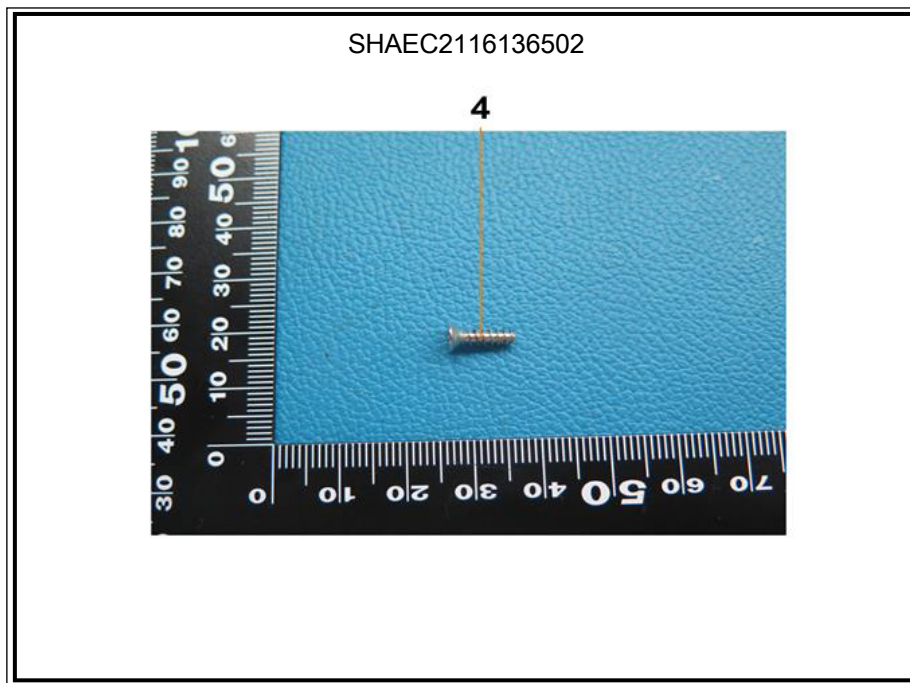
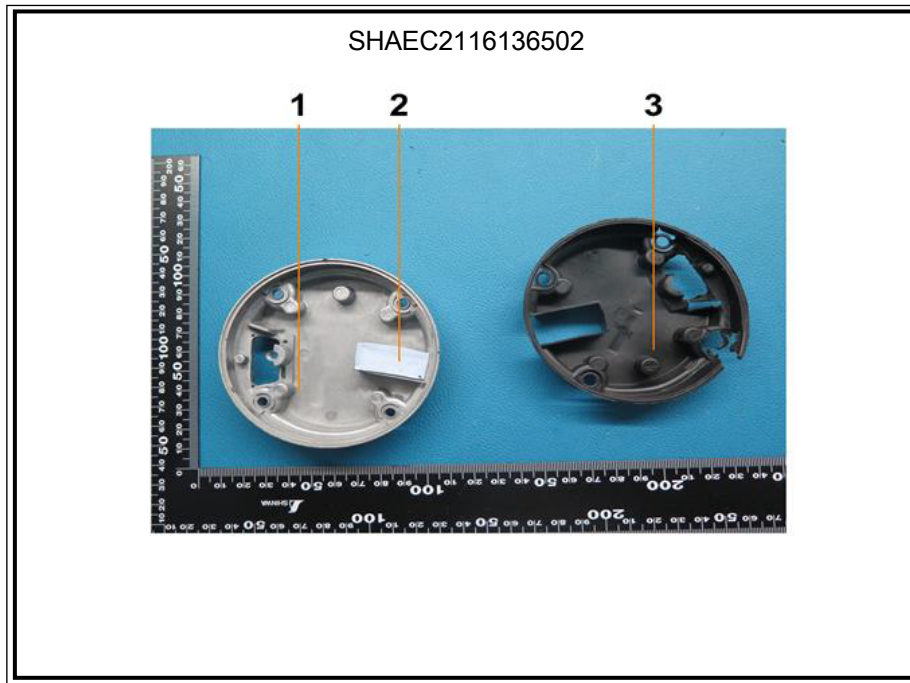
Unless otherwise agreed in writing, this document is issued by the Company subject to its General Conditions of Service printed overleaf, available on request or accessible at <http://www.sgs.com/en/Terms-and-Conditions.aspx> and, for electronic format documents, subject to Terms and Conditions for Electronic Documents at <http://www.sgs.com/en/Terms-and-Conditions/Terms-e-Documents.aspx>. Attention is drawn to the limitation of liability, indemnification and jurisdiction issues defined therein. Any holder of this document is advised that information contained hereon reflects the Company's findings at the time of its intervention only and within the limits of Client's instructions, if any. The Company's sole responsibility is to its Client and this document does not exonerate parties to a transaction from exercising all their rights and obligations under the transaction documents. This document cannot be reproduced except in full, without prior written approval of the Company. Any unauthorized alteration, forgery or falsification of the content or appearance of this document is unlawful and offenders may be prosecuted to the fullest extent of the law. Unless otherwise stated the results shown in this test report refer only to the sample(s) tested.

Attention: To check the authenticity of testing / inspection report & certificate, please contact us at telephone: (86-755) 8307 1443, or email: [CN.Doccheck@sgs.com](mailto:CN.Doccheck@sgs.com)

3<sup>rd</sup> Building, No. 889 Yishan Road Xuhui District, Shanghai China 200233  
中国·上海·徐汇区宜山路889号3号楼 邮编: 200233

t E&E (86-21) 61402553 f E&E (86-21) 64953679 www.sgsgroup.com.cn  
t HL (86-21) 61402594 f HL (86-21) 61156899 e [sgs.china@sgs.com](mailto:sgs.china@sgs.com)





Unless otherwise agreed in writing, this document is issued by the Company subject to its General Conditions of Service printed overleaf, available on request or accessible at <http://www.sgs.com/en/Terms-and-Conditions.aspx> and, for electronic format documents, subject to Terms and Conditions for Electronic Documents at <http://www.sgs.com/en/Terms-and-Conditions/Terms-e-Documents.aspx>. Attention is drawn to the limitation of liability, indemnification and jurisdiction issues defined therein. Any holder of this document is advised that information contained hereon reflects the Company's findings at the time of its intervention only and within the limits of Client's instructions, if any. The Company's sole responsibility is to its Client and this document does not exonerate parties to a transaction from exercising all their rights and obligations under the transaction documents. This document cannot be reproduced except in full, without prior written approval of the Company. Any unauthorized alteration, forgery or falsification of the content or appearance of this document is unlawful and offenders may be prosecuted to the fullest extent of the law. Unless otherwise stated the results shown in this test report refer only to the sample(s) tested.

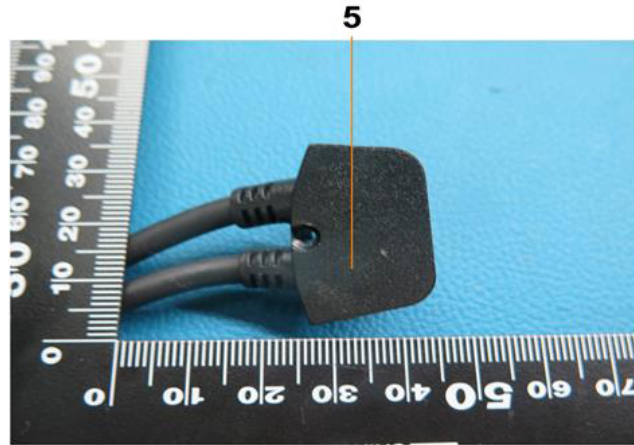
Attention: To check the authenticity of testing / inspection report & certificate, please contact us at telephone: (86-755) 8307 1443, or email: [CN.Doccheck@sgs.com](mailto:CN.Doccheck@sgs.com)

SGS-CSTC (Shanghai) Technical Services (Shanghai) Co., Ltd.  
Testing Center - China (Shanghai) Co., Ltd.

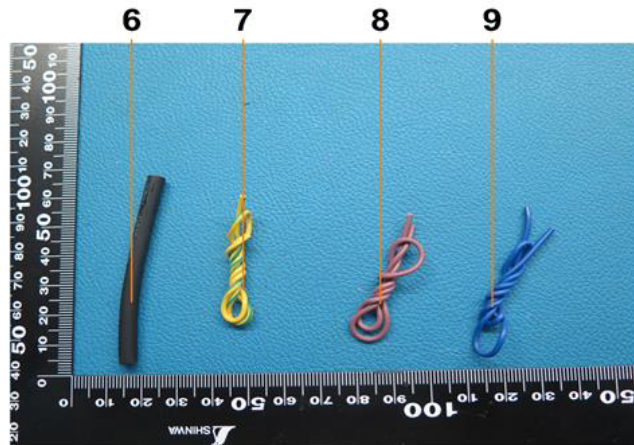
3<sup>rd</sup> Building, No. 889 Yishan Road Xuhui District, Shanghai China 200233  
中国·上海·徐汇区宜山路889号3号楼 邮编: 200233

t E&E (86-21) 61402553 f E&E (86-21) 64953679 www.sgsgroup.com.cn  
t HL (86-21) 61402594 f HL (86-21) 61156899 e [sgs.china@sgs.com](mailto:sgs.china@sgs.com)

SHAEC2116136502



SHAEC2116136502



Unless otherwise agreed in writing, this document is issued by the Company subject to its General Conditions of Service printed overleaf, available on request or accessible at <http://www.sgs.com/en/Terms-and-Conditions.aspx> and, for electronic format documents, subject to Terms and Conditions for Electronic Documents at <http://www.sgs.com/en/Terms-and-Conditions/Terms-e-Documents.aspx>. Attention is drawn to the limitation of liability, indemnification and jurisdiction issues defined therein. Any holder of this document is advised that information contained hereon reflects the Company's findings at the time of its intervention only and within the limits of Client's instructions, if any. The Company's sole responsibility is to its Client and this document does not exonerate parties to a transaction from exercising all their rights and obligations under the transaction documents. This document cannot be reproduced except in full, without prior written approval of the Company. Any unauthorized alteration, forgery or falsification of the content or appearance of this document is unlawful and offenders may be prosecuted to the fullest extent of the law. Unless otherwise stated the results shown in this test report refer only to the sample(s) tested.

Attention: To check the authenticity of testing / inspection report & certificate, please contact us at telephone: (86-755) 8307 1443, or email: [CN.Doccheck@sgs.com](mailto:CN.Doccheck@sgs.com)

3<sup>rd</sup> Building, No. 889 Yishan Road Xuhui District, Shanghai China 200233

t E&E (86-21) 61402553 f E&E (86-21) 64953679

[www.sgsgroup.com.cn](http://www.sgsgroup.com.cn)

中国·上海·徐汇区宜山路889号3号楼 邮编: 200233

t HL (86-21) 61402594 f HL (86-21) 61156899

[e sgs.china@sgs.com](mailto:e sgs.china@sgs.com)

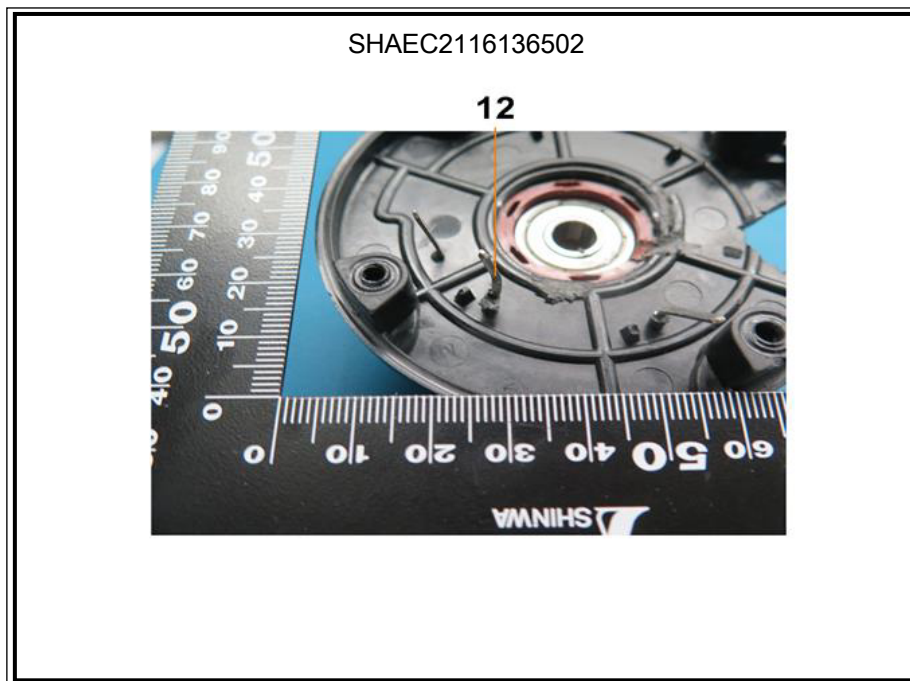
SHAEC2116136502

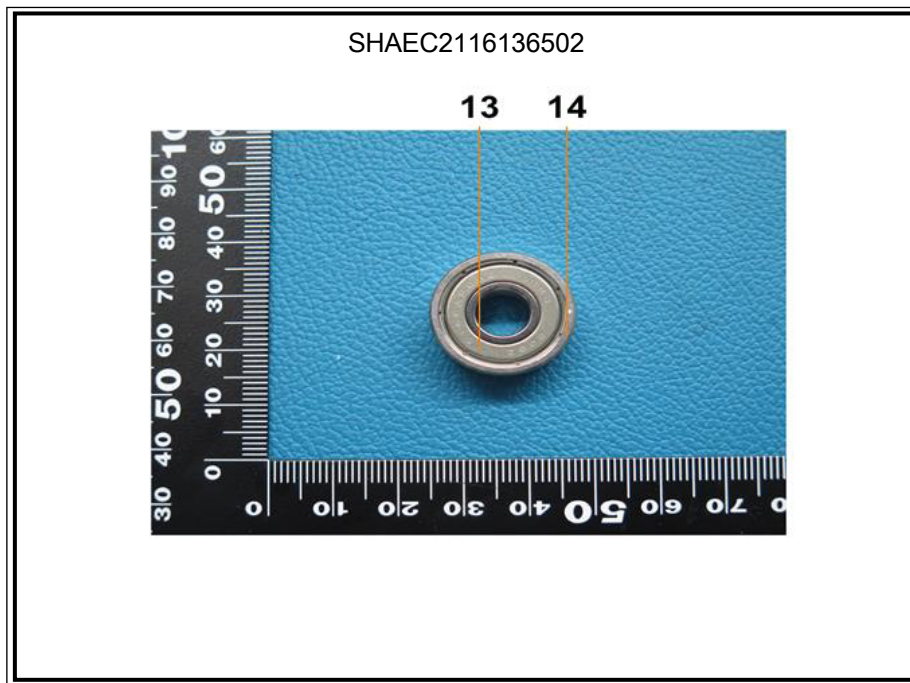


SHAEC2116136502

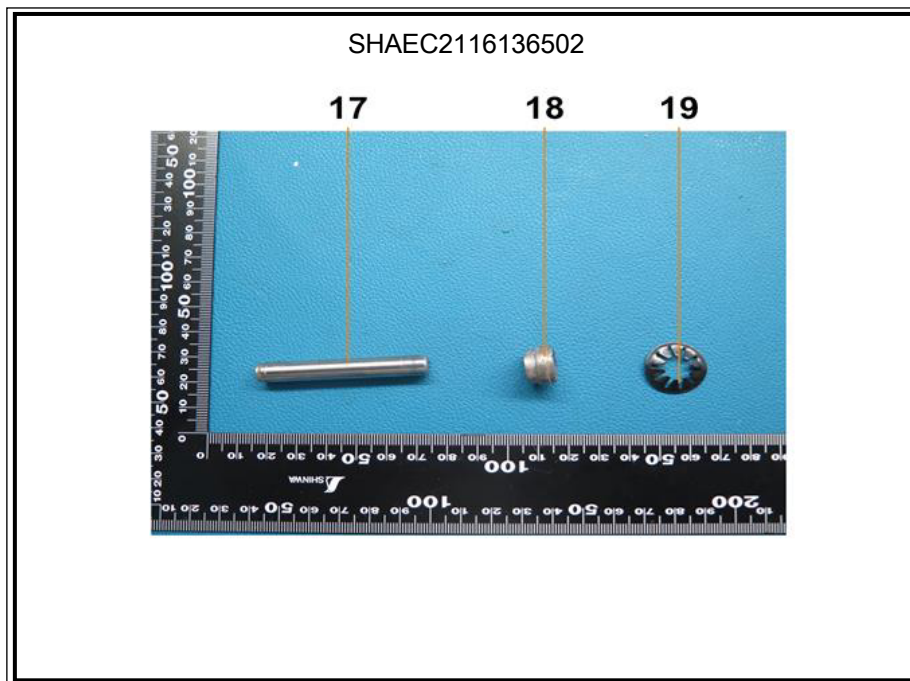
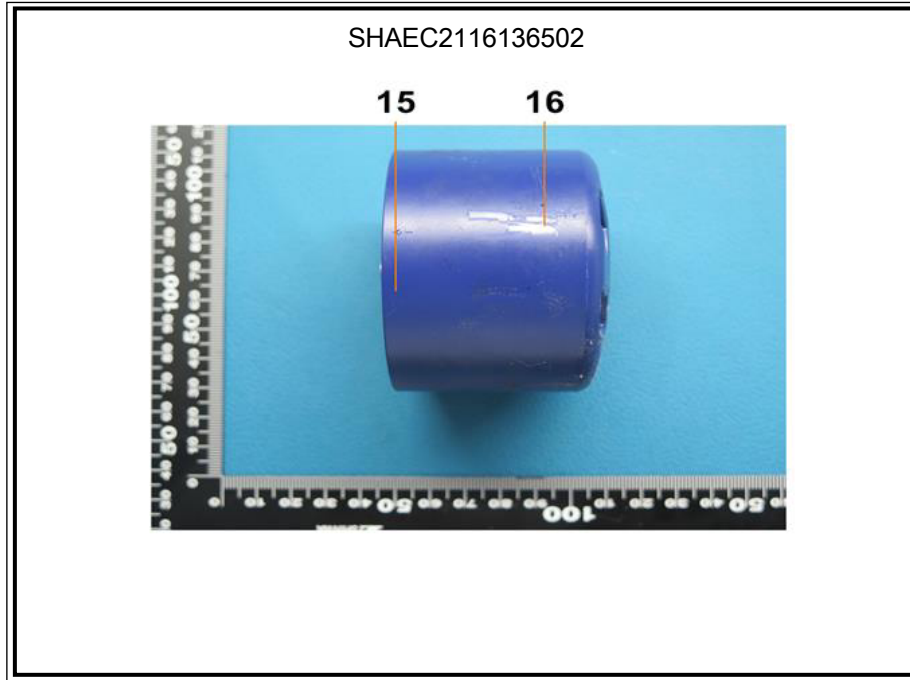




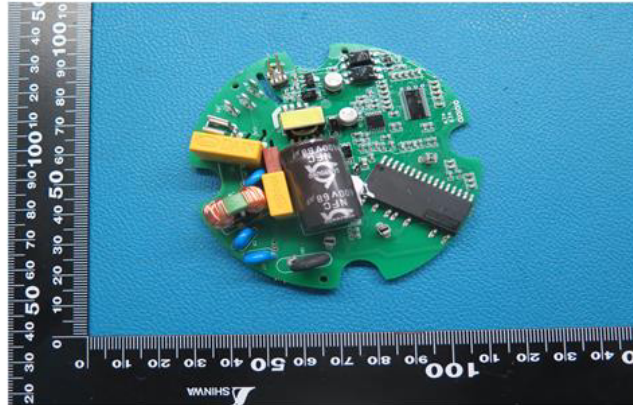






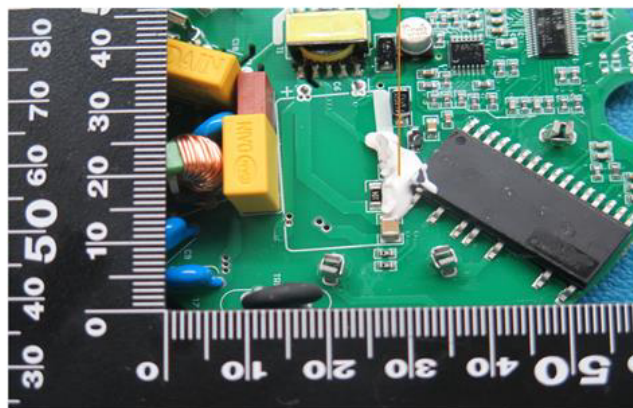


SHAEC2116136502

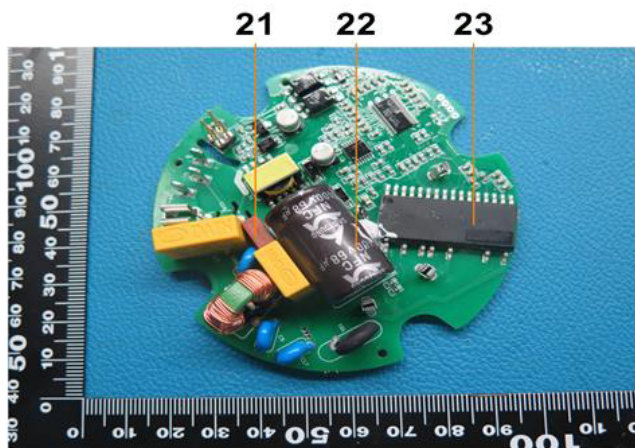


SHAEC2116136502

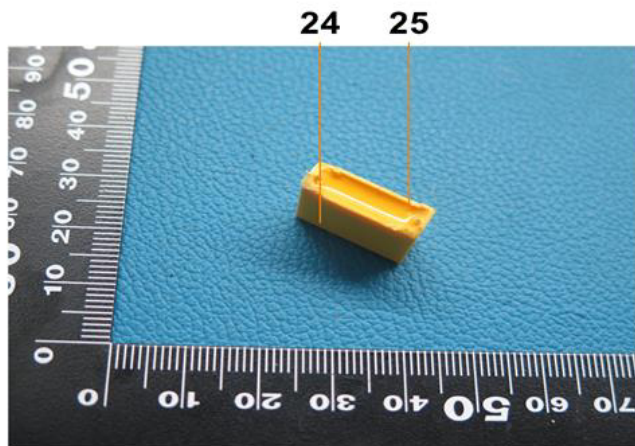
20



SHAEC2116136502

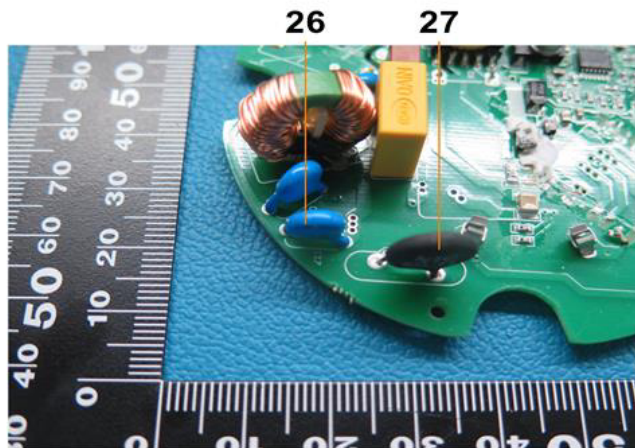


SHAEC2116136502

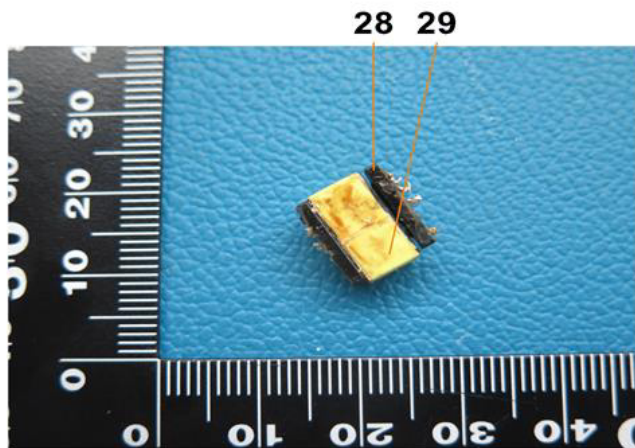




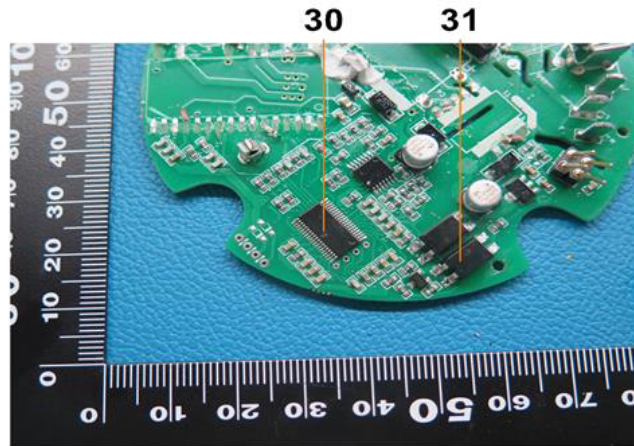
SHAEC2116136502



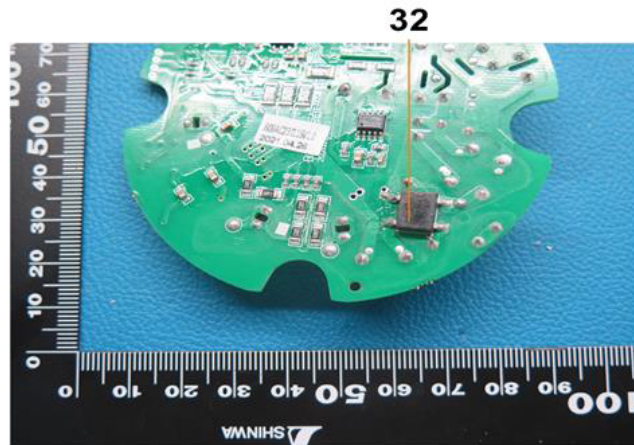
SHAEC2116136502



SHAEC2116136502



SHAEC2116136502



Unless otherwise agreed in writing, this document is issued by the Company subject to its General Conditions of Service printed overleaf, available on request or accessible at <http://www.sgs.com/en/Terms-and-Conditions.aspx> and, for electronic format documents, subject to Terms and Conditions for Electronic Documents at <http://www.sgs.com/en/Terms-and-Conditions/Terms-e-Documents.aspx>. Attention is drawn to the limitation of liability, indemnification and jurisdiction issues defined therein. Any holder of this document is advised that information contained hereon reflects the Company's findings at the time of its intervention only and within the limits of Client's instructions, if any. The Company's sole responsibility is to its Client and this document does not exonerate parties to a transaction from exercising all their rights and obligations under the transaction documents. This document cannot be reproduced except in full, without prior written approval of the Company. Any unauthorized alteration, forgery or falsification of the content or appearance of this document is unlawful and offenders may be prosecuted to the fullest extent of the law. Unless otherwise stated the results shown in this test report refer only to the sample(s) tested.

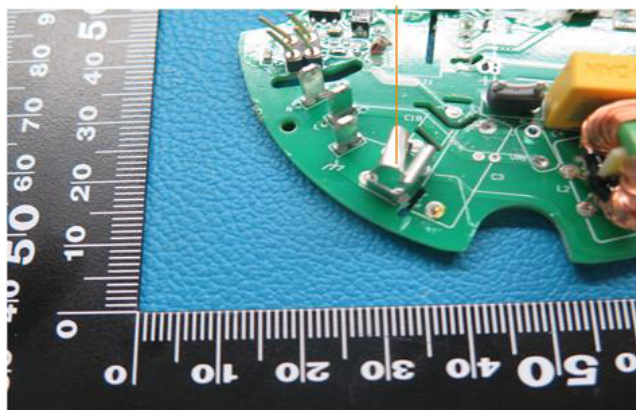
Attention: To check the authenticity of testing / inspection report & certificate, please contact us at telephone: (86-755) 8307 1443, or email: [CN.Doccheck@sgs.com](mailto:CN.Doccheck@sgs.com)

3<sup>rd</sup> Building, No. 889 Yishan Road Xuhui District, Shanghai China 200233 t E&E (86-21) 61402553 f E&E (86-21) 64953679 www.sgsgroup.com.cn  
中国·上海·徐汇区宜山路889号3号楼 邮编: 200233 t HL (86-21) 61402594 f HL (86-21) 61156899 e [sgs.china@sgs.com](mailto:sgs.china@sgs.com)



SHAEC2116136502

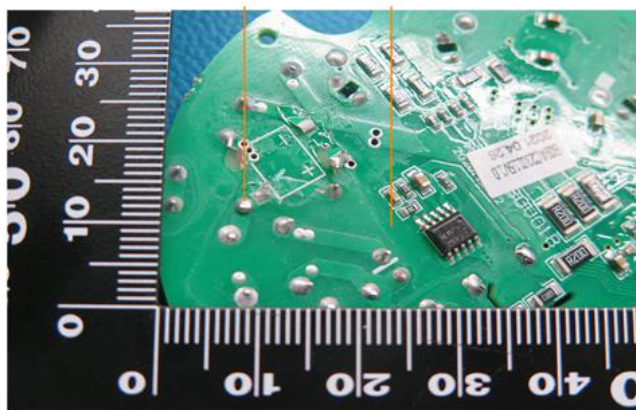
33



SHAEC2116136502

34

35



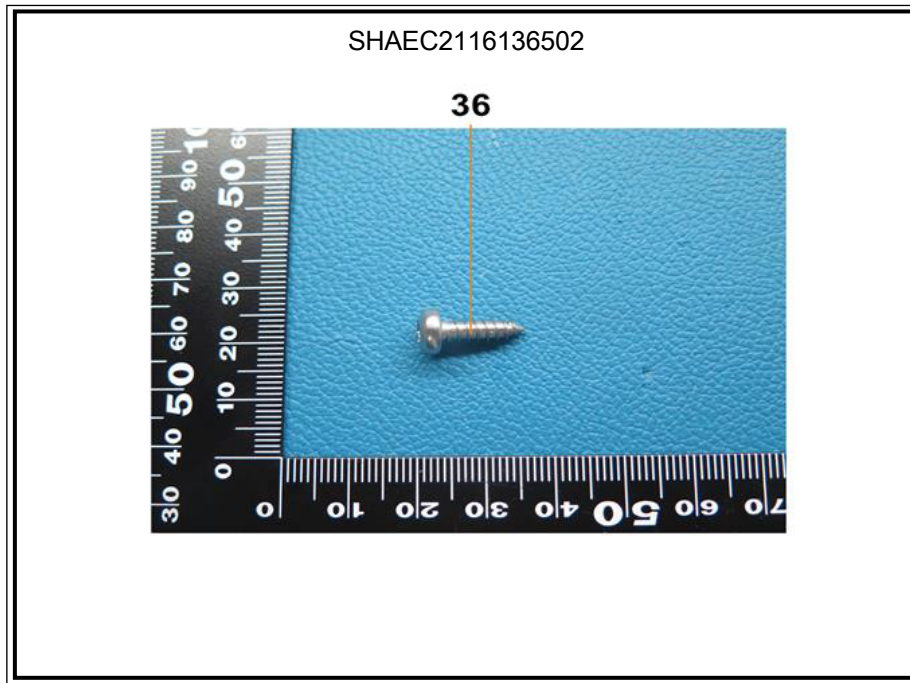
SGS CSTC (Shanghai) Technical Services Co., Ltd.  
Testing Center - China (Shanghai) Co., Ltd.

Unless otherwise agreed in writing, this document is issued by the Company subject to its General Conditions of Service printed overleaf, available on request or accessible at <http://www.sgs.com/en/Terms-and-Conditions.aspx> and, for electronic format documents, subject to Terms and Conditions for Electronic Documents at <http://www.sgs.com/en/Terms-and-Conditions/Terms-e-Documents.aspx>. Attention is drawn to the limitation of liability, indemnification and jurisdiction issues defined therein. Any holder of this document is advised that information contained hereon reflects the Company's findings at the time of its intervention only and within the limits of Client's instructions, if any. The Company's sole responsibility is to its Client and this document does not exonerate parties to a transaction from exercising all their rights and obligations under the transaction documents. This document cannot be reproduced except in full, without prior written approval of the Company. Any unauthorized alteration, forgery or falsification of the content or appearance of this document is unlawful and offenders may be prosecuted to the fullest extent of the law. Unless otherwise stated the results shown in this test report refer only to the sample(s) tested.

Attention: To check the authenticity of testing / inspection report & certificate, please contact us at telephone: (86-755) 8307 1443, or email: [CN.Doccheck@sgs.com](mailto:CN.Doccheck@sgs.com)

3<sup>rd</sup> Building, No. 889 Yishan Road Xuhui District, Shanghai China 200233  
中国·上海·徐汇区宜山路889号3号楼 邮编: 200233

t E&E (86-21) 61402553 f E&E (86-21) 64953679 www.sgsgroup.com.cn  
t HL (86-21) 61402594 f HL (86-21) 61156899 e [sgs.china@sgs.com](mailto:sgs.china@sgs.com)



此照片仅限于随SGS正本报告使用

\*\*\* 报告完 \*\*\*



SGS-CSTC (Shanghai) Co., Ltd.  
Testing Center (China) Co., Ltd.

Unless otherwise agreed in writing, this document is issued by the Company subject to its General Conditions of Service printed overleaf, available on request or accessible at <http://www.sgs.com/en/Terms-and-Conditions.aspx> and, for electronic format documents, subject to Terms and Conditions for Electronic Documents at <http://www.sgs.com/en/Terms-and-Conditions/Terms-e-Documents.aspx>. Attention is drawn to the limitation of liability, indemnification and jurisdiction issues defined therein. Any holder of this document is advised that information contained hereon reflects the Company's findings at the time of its intervention only and within the limits of Client's instructions, if any. The Company's sole responsibility is to its Client and this document does not exonerate parties to a transaction from exercising all their rights and obligations under the transaction documents. This document cannot be reproduced except in full, without prior written approval of the Company. Any unauthorized alteration, forgery or falsification of the content or appearance of this document is unlawful and offenders may be prosecuted to the fullest extent of the law. Unless otherwise stated the results shown in this test report refer only to the sample(s) tested.

Attention: To check the authenticity of testing / inspection report & certificate, please contact us at telephone: (86-755) 8307 1443, or email: [CN.Doccheck@sgs.com](mailto:CN.Doccheck@sgs.com)

3<sup>rd</sup> Building, No. 889 Yishan Road Xuhui District, Shanghai China 200233  
中国·上海·徐汇区宜山路889号3号楼 邮编: 200233

t E&E (86-21) 61402553 f E&E (86-21) 64953679 www.sgsgroup.com.cn  
t HL (86-21) 61402594 f HL (86-21) 61156899 e [sgs.china@sgs.com](mailto:sgs.china@sgs.com)